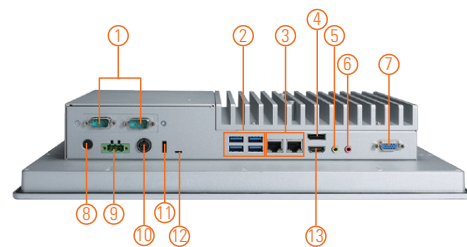
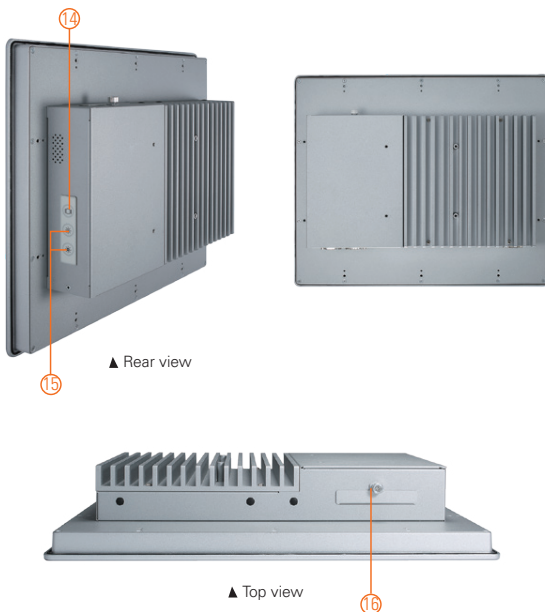
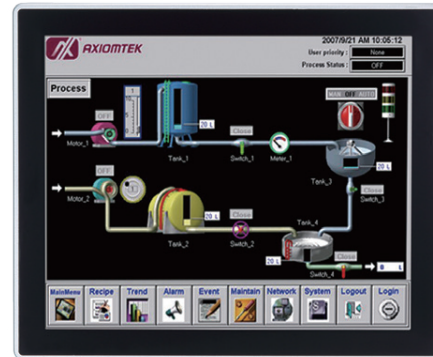


GOT317-502-FR NEW

17" SXGA TFT Expandable Touch Panel Computer with
6/7th Gen Intel® Core™ i7/i5/i3 Processor (0°C to +40°C)

Features

- 17" SXGA TFT flat resistive touch
- LGA1151 socket 7th gen Intel® Core™ i7/i5/i3, Celeron® & Pentium® processor
- Intel® H110 chipset
- 4 USB 3.0 and 2 COM ports
- 2.5" SATA HDD and mSATA
- WLAN module & antenna (optional)
- IP65 front bezel
- Supports panel mount and VESA mount (VESA arm/desktop stand/wall mount optional)
- Built-in speakers and removable hard drive design



- | | | |
|-----------------------|--------------------------------------|---------------------------|
| 1. COM x 2 (cable) | 7. VGA output (cable) | 13. HDMI output |
| 2. USB 3.0 x 4 | 8. Power button (ATX) | 14. Backlight switch |
| 3. Ethernet x 2 | 9. Terminal block for DC power input | 15. Brightness adjust +/- |
| 4. DisplayPort output | 10. Power input connector | 16. Swappable HDD |
| 5. Audio (Line-out) | 11. Remote power switch port | |
| 6. Audio (Mic-in) | 12. AT/ATX selectable switch | |

Introduction

The GOT317-502-FR is a multimedia 17" touch panel PC for kiosk application. It has a fashionable mechanism design and industrial-grade material front bezel which can avoid damage from chemical corrosion. To meet the demands of multimedia application, the GOT317-502-FR is powered by a high performance LGA1151 socket 6/7th generation Intel® Core™ processor with the Intel® H110 Express chipset. It features two COM ports, two Gigabit Ethernet and up to 32GB memory of dual-channel DDR4-2400 that delivers high computing capability for high performance-demanding applications. The industrial touch panel PC is most suitable for kiosk, factory and automation.

Removable hard drive design

The GOT317-502-FR has designed with removable HDD. User can easily plug in standard 2.5" HDD based on any application needs.

Speaker and WLAN Antenna Supported

The GOT317-502-FR features built-in speakers for kiosk application to display multimedia content program. It also supports WLAN module antenna (optional) for wireless network connectivity.

Specifications

Front Bezel	Aluminum w/ IP65/NEMA 4 rugged protection	
LCD Panel	Display Type	17" SXGA TFT LCD
	Brightness	350 nits
	Resolution	1280 x 1024 pixels
	Viewing Angle	160°/140°
Main System	CPU	LGA1151 socket 6/7th generation Intel® Core™ i7/i5/i3, Celeron® & Pentium® processor
	Chipset	Intel® H110
	System Memory	2 x 260-pin DDR4-2400 SO-DIMM, up to 32GB
	BIOS	AMI UEFI BIOS
	Storage	1 x 2.5" SATA HDD
	Drive	N/A
	Watchdog Timer	255 levels, 1 ~ 255 sec.

Specifications

IO Connector	2 x RS-232/422/485 1 x HDMI v1.4 1 x VGA (up to 1920 x 1200 60Hz) 1 x DisplayPort v1.2 (DP++) 4 x USB 3.0 2 x 10/100/1000 Mbps Ethernet (Intel® i219LM/i211AT) 1 x Audio (Mic-in/Line-out)
Expansion Interface	1 x half-size PCI Express Mini Card slot (MPCIE1) 1 x full-size PCI Express Mini Card slot (MSATA_MPCIE2)
Touchscreen	Flat resistive touch
Power Supply	DC terminal block: +12V / +19V / +24V AC adapter: 19V, 6.32A
Power Consumption	120W (include 35W processor)
Dimensions	398.02 mm (15.67") (W) x 77.5 mm (3.05") (D) x 330.44 mm (13.01") (H)
Packing Dimension	510 mm (20.08") (W) x 190 mm (7.48") (D) x 540 mm (21.26") (H)
Weight (net/gross)	6.7 kg (14.77 lb)/9.0 kg (19.84 lb)
Environment	Operating temperature: 0°C ~ +40°C (+32°F ~ +104°F) Relative humidity: 10% ~ 90% @ 40°C, non-considering Operating vibration: 1.0G, 5 ~ 500Hz, random
Certificate	CE

Ordering Information

GOT317-502-FR-DC	17" SXGA TFT fanless touch panel computer with LGA1151 socket 6th/7th generation Intel® Core™ Pentium®, Celeron® processor, 5-wire flat resistive touch screen and 12/19/24 VDC terminal block connector
------------------	--

* Specification and certifications are based on requirements and may vary.

Optional Accessories

82231770050E	GOT3177T-834 Wall Mount Kit
--------------	-----------------------------

Optional OS Installation

Windows® 7 32/64-bit, Windows® 8.1 64-bit, Windows® 10 64-bit (Sky Lake)
Windows® 10 64-bit (Kaby Lake)

Heavy-duty Fanless Touch Panel Computers

- 0
- 1
- 2
- 3
- 4
- 5
- 6
- 7
- 8
- 9

Dimensions

